

Manulife Shariah China Equity Fund

Capitalise on China's economic growth through Shariah-compliant investment opportunities



Combining onshore and offshore for greater breadth and depth

The FTSE Shariah China Index offers a universe of more than 550 stocks across multiple sectors and various share types. Explore the Shariah-compliant investment opportunities in China's onshore and offshore equity markets.

Source: Factset, FTSE Bloomberg, as of March 2021.

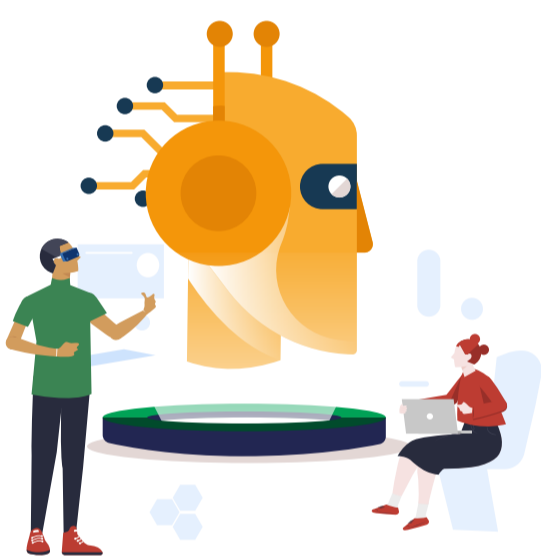


Tap into China's interconnected investment opportunities

From industrial upgrade and localization of high-end supply chain.

- **Tech supply chain**
Upstream localization, foundry upgrade
- **5G**
Handset and IoT, components, data traffic
- **Industrial automation**
Robotics, AI
- **Electric vehicles**
Battery, OEM/ODM/Brands, autonomous driving

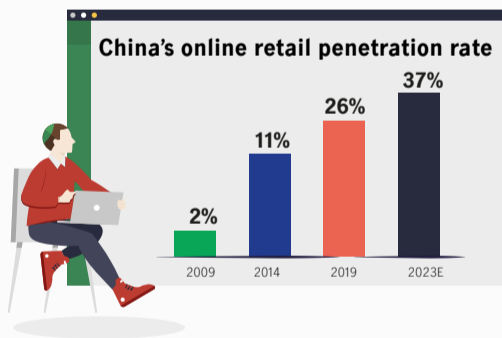
For illustrative purposes only. Not an exclusive list for investment opportunities. Source: Manulife Investment Management, July 2021.



"New infrastructure" to be technology dominated

Over RMB 1 trillion capex is expected to be spent in this "New Infrastructure" with the aim of achieving productivity gains and automation upgrade.

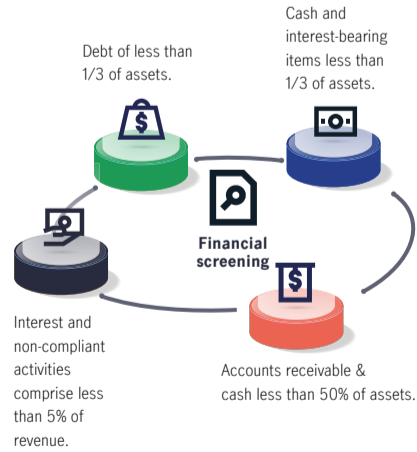
Source: Goldman Sachs Investment Research, IBES, as of April 2020
The above information may contain projections or other forward-looking statements regarding future events, targets, management discipline or other expectations. There is no assurance that such events will occur, and the future course may be significantly different from that shown here.



China's online consumption expected to continue rising

Momentum for online consumption seems irreversible.

Source: National Bureau of Statistics of China, Credit Suisse, as of May 2020. The above information may contain projections or other forward-looking statements regarding future events, targets, management discipline or any other expectations. There is no assurance that such events will occur, and the future course may be significantly different from that shown here.



Enjoy peace of mind with Shariah-compliant investments

Investments undergo two levels of screenings

- Business activity screening
- Financial ratios screening

The financial screening leads to investments in companies with a stronger balance sheet and liquidity.

Disclaimer:

The above information has not been reviewed by the SC and is subject to the relevant warning, disclaimer, qualification or terms and conditions stated herein. Investors are advised to read and understand the contents of the Prospectus of Manulife Shariah China Equity Fund dated 24 August 2021 and all the respective Product Highlights Sheet(s) (collectively, the "Offering Documents"), obtainable at our offices or website, before investing. The Offering Documents have been registered with the Securities Commission Malaysia (SC), however the registration with the SC does not amount to nor indicate that the SC has recommended or endorsed the product. There are risks involved with investing in unit trust funds; wholesale funds and/or Private Retirement Schemes. Some of these risks associated with investments in unit trust funds; wholesale funds and/or Private Retirement Schemes are interest rate fluctuation risk, foreign exchange or currency risk, country risk, political risk, credit risk, non-compliance risk, counterparty risk, target fund manager risk, liquidity risk and interest rate risk. For further details on the risk profile of all the funds, please refer to the Risk Factors section in the Offering Documents. The price of units and income distribution may go down as well as up. Investors should compare and consider the fees, charges and costs involved. Investors are advised to conduct own risk assessment and consult the professional advisers if in doubt the action to be taken.

The above is intended for the exclusive use by the recipients who are allowable to receive this information under the applicable laws and regulations of the relevant jurisdictions. It is for reference only and is not intended to predict or project any investment result. No information contained here should be relied upon/regarded as investment advice or solicitation to buy or sell any security. The opinions expressed in the material are those as of the date of writing and are subject to change. Investment involves risk.

Please note that this material must not be wholly or partially reproduced, distributed, circulated, disseminated, published or disclosed, in any form and for any purpose, to any third party without prior approval from Manulife Investment Management.